



# grenfell preschool & long day care centre

## AGM

### Annual General Meeting – 26th September

We need a committee to operate our centre. Please think about coming along to the AGM and support those who wish to be on the committee. Remember we have a director and staff to be there to help you all.

**Are you interested in becoming more involved in the day-to-day running of the Centre?**

**Would you like to be part of our Management Committee?**

If you are interested in being part of our Committee, please come along to the AGM. Everyone is welcome! Nominations and elections take place at the AGM. **Written nominations will be accepted prior to the AGM.**

We invite all parents to come along to the AGM and to become more involved in our fantastic Centre.

Nomination forms are available at the office.



### Working Bee at the Centre

On the 22<sup>nd</sup> October 2011, the centre will be holding a working bee starting at 9am and going till 12pm. Bring your spade and secateurs. Please come along and help make the centre a better place for our kids.



### Junior Cricket

The Junior Cricket tried to hold an AGM and only 5 parents attended. For Grenfell Jnr Cricket to exist this season we need Parents to contribute. The club needs a Secretary and people to organise teams. If this does not happen, kids that wish to play will have to register with Cowra or surrounds and play there.

The competition will begin in 6 weeks time at Cowra so we do not have much time.

If you are interested in Junior Cricket continuing, please contact Megan

[wareepastoral@bigpond.com](mailto:wareepastoral@bigpond.com)



### Loud Shirt Day

Loud Shirt day is Friday 21<sup>st</sup> October. If your child has a shirt that is bright, please let them wear it on the day, to support children diagnosed with hearing loss in NSW and ACT



### Travelling on the Bus

Loader's Bus Company provides a connecting bus service from the Grenfell Pre School and Long day Care Centre to the Grenfell Public School where children from the centre are able to access their home bus. For children to be covered by Loader's Bus Company's Insurance they need to pay \$1.00 to utilise rural buses. Families pay a bus fare once per day.



### School transition

Transition to the Grenfell Public School will start on Tuesday 25<sup>th</sup> October and run for 5 weeks. St Joseph's school transition program will run for four consecutive Wednesdays starting 2<sup>nd</sup> November

Notes will be going home this month regarding dates and times, and, will need to be signed if your child is attending preschool on these days. If you know of any child not attending the centre who may be eligible for school in 2012, please tell them of the dates and ask them to contact the relevant school.

### Positive Parenting Program – Triple P

The positive Parenting programme started last Wednesday night. The comments that I have received from some of the parents that attended was that it was fantastic. A staff member went and she said just by going the first night she learnt so much and would encourage all parents to attend. It is not too late to sign up. Please contact the office for any queries.

## Staff

Miss Emily is on Annual leave and will be back on Wednesday

Janine is away and will be back on the 19th September

Sharon is on Annual Leave and will be away until the 10<sup>th</sup> October.

## Grenfell Open Day

Grenfell Open day is coming up on October 1<sup>st</sup>. Lions will be having their merry go round down the main street and have asked us to do some face painting. Rochelle and Janine will be in charge of the face painting so take your children down and let them get their faces painted.

## The Grenfell Show

Congratulations to all the winners at the Grenfell Show. Miss Emily did extremely well with her homemade plum sauce and her prize winning beetroot. Phoenix was very proud showing us that she was little Miss showgirl. Sadies' prize winning drawing was amazing and her mother Rae won many prizes. Our centre is full of talented children with talented parents.

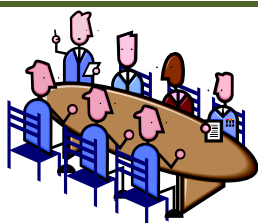
## OPERATION CHRISTMAS CHILD.

The aim of Operation Christmas Child is to send shoe boxes filled with gifts to children in poverty. Each child receives a shoebox filled with school supplies, toys and clothes. The shoeboxes are designed to bring hope and pleasure to children in need, who may never have received a gift before.

We are hoping that together we can fill a few boxes to donate to this worthy cause.

Please also remember that all the items donated must be new. If you would like to discuss this subject, feel free to speak to a staff member. Please leave donated gifts with any staff member at our centre.

Your generosity will be much appreciated. The boxes are due back by the 25<sup>th</sup> October



## Committee Corner

**AGM 7pm Monday 26<sup>th</sup> Sept**

**End of year Closure 23<sup>rd</sup> December**

**Reopens 9<sup>th</sup> January 2012**



## Dates to Remember

### Young Eyes Eye Screening

Wednesday 19<sup>th</sup> October 2011 starting 9am

### Community Health Centre – Immunisation Clinic

3<sup>rd</sup> Wednesday of the month

### School Photos

Grenfell Tuesday 15<sup>th</sup> November 2011

### AGM

26<sup>th</sup> September 2011

### End of year Closure

The centre will close on Friday 23<sup>rd</sup> December and reopen on Monday 9<sup>th</sup> January

## Contact Us



35 Forbes Street  
(PO Box 35)  
Grenfell NSW 2810



02 63431743



02 6343 1304